

# LIVE CAST PRODUCTION SYSTEM

## A new way of content creations

The emergence of NDI and SRT transmission resolve our needs in efficiency of multimedia live production and content distribution purpose.



### flp™ Wireless LIVECAM

360° Tally  
High-speed Precise Pan Tilt 300°/sec  
5 Kinds of Signal Transmit Simultaneously



### LIVECAST STATION

#### LIVECAM STATION



FP-PT4NW



FP-LC8NW



#### ALL in ONE

- Visual & Audio Mixer
- PTZ Joystick Control
- Director Intercom
- Tally System
- Stream Codec
- Title & Chroma Key
- Media Recorder
- Wired/Wireless Config



FP-R20NW  
Wireless Encoder



#### flp™ LIVE CAM



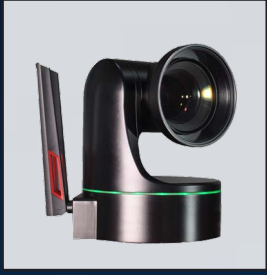
FP120  
Box Cam

EYES P100



PTZ Keyboard





Model	FP-PT4NW	FP-PT1NW
	<b>flip™ LIVECAM Station</b> <b>(NDI HX Wireless PTZ Camera, Optional Live RTMP/SRT Wireless Capable)</b>	
Imager	1/2.5" Back-Illuminated Exmor R CMOS	1/1.8" Exmor RS CMOS
Pixels	8,930,000Pixels	2,400,000 Pixels
Zoom	Optical Zoom 20X optical; Super Resolution Zoom (SRZ) 4K 30X, HD 40X;	12X
Signal Format	2160/29.97p, 1080/59.94p, 1080/59.94i, 720/59.94p, 2160/25p, 1080/50p, 1080/50i, 720/50p, 2160/23.98p, 1080/23.98p	1080p/60,1080i/60,1080p/50,1080i/50, 1080p/30,1080p/25,
Distortion	-2%~0.2%	
Pan / tilt angle	Pan -175°~+175°, Tilt +90°~45°	Pan-175°~+175°,Tilt+90°~-30°
Pan / tilt speed	Servo motor control. Shift speed: Pan 0.1°~300°/s, Tilt 0.1°~300°/s	
Pan / tilt precision	Precision repeatability error <0.01	
Shift / pitch slow	Support	
Min illumination	0.01 Lux	
SNR	50dB	55dB
Definition	3840x2160	1920x1080
Iris/Focus/White BAL	Auto/Manual	
Focal length	f=4.4mm~88mm, F2.0 (Wide)~F3.8 (Tele)	f=4.2mm 50.4mm,F1.8 (Wide) F2.8 (Tele)
Min distance	10mm~INF (Wide), 1500mm~INF (Tele)	1000mm INF (Wide),1500mm INF (Tele)
Preset position	100	
Camera control	VISCA RS-422, RJ45 (input/output), Support control, NDI HX wireless	
Interface	HDMI×1(PT4NW only), BNC (×1), 1.0 Vp-p, 75Ω, 3G-SDI OUT×1(option) ; NDI RJ45×1, NDI HX wireless Wi-Fi×2 IEEE802.11a/b/g/n/ac, USB×1	
Wireless	NDI HX wireless, Delayed 150ms; (Optional SRT)	NDI HX wireless, Delayed 100ms; (Optional SRT)
Video coding	H.264 Baseline/Main/High Profile, 4:2:0, MAX:32Mbps	H.264 Baseline/Main/High Profile,4:2:0, MAX:8Mbps
Audio coding	AAC LC, 32Kbps, 64Kbps, 96Kbps,128 Kbps	
REC	MP4/MOV; 1920x1080@60fps	
Recorder Media	Ultra TF (MicroSD), FAT32, exFAT	
Tally	360°Tally	
DC input	DC jack 12DC, DC10.8V-13.2V, Power supply	
Dimension/Weight	Size:160×155×230mm, Weight: ~3kg	Size: 160×155×230 mm; Weight: ~3.7kg



Model	<b>FP-R20NW Encode Recording Unit</b> <b>(With NDI HX Wireless, Optional Wireless SRT Transimssion)</b>
Video I/O Ports	Input: BNC×1, SD/HD/3G SDI Loop Out: BNC×1, SD/HD/3G SDI Output: Wi-Fi Antenna Port×, SMA-KEW IEEE 802.11 a/b/g/n/ac 5G frequency
Network Port	RJ45 ×1, 10/100/1000 Mbps Ethernet
Control Interface	UART serial port for controlling cameras. VISCA support
Antenna Frequency Range	2400-2500MHz, 5000-5850MHz, gain: 3db/8db /10db, standing wave ratio: 1.5, Input impedance:50Ω, high power: 50W, connector type SMA male, Antenna size: 160mm*18mm.
Other I/O	Power connector × 1, 12V, 2A. Micro SD card socket × 1, store recording files. USB type-A ×1, U-disk recording. 3.5mm jack × 1, MIC.
Support Input Format	SDI input loop out signal characteristics • Support SD/HD/3Ga/3Gb/3Gb-DL/3Gb-DS standard. • Supports up to 2048x1080 signal input. • Supports 8/10/12-bit color depth. • Support 60p, 60i, 50p, 50i, 30p, 25p signal formats.
Recording	• Video encoding: H.264 Baseline / Main / High Profile, 4:2:0, max. 8Mbps. • Audio encoding: AAC LC, supports 32 Kbps, 64 Kbps, 96 Kbps, 128 Kbps. • Recording file format: MP4 / MOV, constant frame and constant code, with TC • Recording format: maximum support 1920x1080@60fps. • Signal format: supports progressive and interlaced signals. • The SD card file system format supports FAT32 and exFAT.
Live	Supports NDI HX 2.0, Encoding rate of the live video is the same as recording.
Dimension	95mm×95mm×30mm
Working Environment	• Power requirements: 100 ~ 240 V AC, 50/60 Hz. • Operating temperature: 5 to 40 degrees Celsius. • Operating humidity: 20% to 80% (non-condensing state).





<b>Model</b>	<b>FP-LC8NW PORTABLE LIVECAST STATION</b>
<b>Video Processing</b>	IN: 3G-SDIx4, HMDIx1, DVIX1, NDIx6, Streamx6, SRTx6, DDR Files 16-CH Hybrid Switching (6 live feeds plus 10 internal processed XPT) PGM OUT: 3G-SDIx1/HDMIx1/NDIx1 PVW OUT: HDMIX1 Loop Out: 3G-SDIx4
<b>Audio Processing</b>	IN: Stereo (L/R) IN RCAx5, MIC XLRx5 Embedded Digital/Analogue 5-CH Audio Live mixing. Hardware Delay Line x2 Stereo (L,R) OUT RCAx1, Balanced XLR OUTx2, Monitor $\Phi$ 3.5x1, Playback monitor $\Phi$ 3.5x1, Audio Embedded HDMI Out The director calls MIC $\Phi$ 3.5x2
<b>Other Interface</b>	USB2.0x2, USB3.0x2, RJ45 1Gigx1
<b>Recording Format</b>	High Definition MPEG2-HL+MP4 Internal SSD Storage. Micro SD Card Slot for removable media H.264, wmv9 Media stream encoder Dual streams recording and live broadcast
<b>Live Streaming I/O</b>	http, rtmp
<b>Wireless Support</b>	NDI HX, RTMP, SRT
<b>Intercom and Tally</b>	Built-in 8 channels tally system and production intercom TALLY/COMM Mini XLR OUTx8, Director Calls
<b>Effect and Subtitle</b>	Title Editor, PinP DVE, Media Playback, Chroma Key
<b>PTZ Control</b>	PTZ Joystick Controller, for remote controlling up to 5 PTZ cameras
<b>Display</b>	Built-in 17" Color Display for production UI
<b>Configuration</b>	Intel i9 9900TCPU, RAM 16G, 1TB M.2, 4G GPU Windows 10 OS
<b>Dimension</b>	425mmx340mmx120mm
<b>Weight</b>	~5Kg

specifications are subject to change without prior notice

