

Preliminary

Collaborate With Your Touches

TABELLA

UP SERIES

INTERACTIVE INTELLIGENT PANEL

Multimedia • Active Learning • Flipped Classroom •
Distance Learning • Collaboration • Creative Centre •
Team Building Hub • Video Conference • Brainstorming
Business Presentation



TABELLA Interactive Intelligent Panel is a perfect solution for interactive business and educational classroom applications. The 4K UHD Panel achieve excellent light transmission for outstanding colour, clarity and accuracy.

The tempered Anti-Scratch and Anti-Glare glass effectively reduce reflection providing audiences more legible text and clearer images. The wide viewing angle and two powerful 15W front 3-ways speakers bring presentations to life.



Dual Operation System
Android & Windows

High Accurate Touch Experience

True 20-points Multi-Touch makes 20 simultaneous accurate writing capable.

With the latest infra-red touch sensor technology, the accuracy is much improved, The recognition layer of the pen tip can be as narrow as 1.5~2mm above the glass surface. Creating accurate, fast react and silky smooth touch experience.

Eye Protection

The smart Eye-Comfort solution can function intuitively with the help of the embedded sensor.

Tabella intelligent panel will adjust brightness automatically by detecting the movement of users close to the screen, thus provides you a smooth and comfortable writing experience.

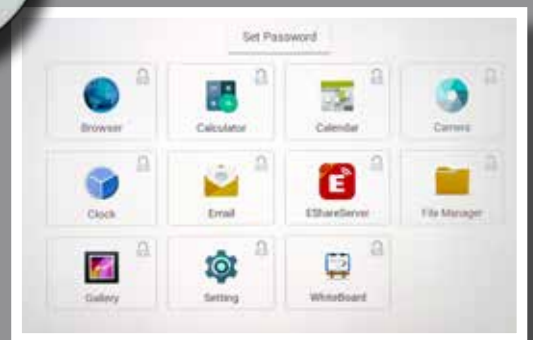
Versatile Connectivity

HDMI, USB, DP and VGA connections provide the versatility to connect to a wide variety of computing and multimedia devices. Thanks to the Floating Tool Bar, you can write, annotate and capture screenshots easily at any channel.



Protect Your Resources

The S-Lock and A-Lock buttons on the floating ball give you full control on the accessibility of screen and every APK application.



Ultra-thin Design

Ultra-thin design & ultra-narrow appearance. Front physical buttons, easy to turn on/off, set up, switch. Front USB interface, anti-collision, accessible to PC and Android sources.



The UP series can save you from the hassles of complicated setup. Simply connect to a PC via the front Touch port and you're all set to deliver compelling IFP touch-enhanced lessons.

Photo in IFP frame by Bess Hamiti from Pixels

EShare and iMirror functions create a collaborative and interactive atmosphere in the meeting room. Only few steps to lecture, present, collaborate and share brainstorming ideas by casting the devices wirelessly

Wireless Interactive Screen Share and Mirroring



BYOD and Brainstorm

EShare is a multiscreen interaction application which makes you experience natural and enjoyable for business presentation, educational training and entertainment.

To use this app on your Android phone or tablet, ensure your Tabella has EShareServer pre-installed.

Stream visual audio files to panel

Users can share screen from mobile devices, with maximum 4 users to share at the same time.

When mirroring small screen (laptop, mobile or tablet) to the panel, annotation on mirror screens will be kept the same across all mirror screens.

Remote control and write on presentation to the panel.

Video Conference



Tabella is designed to be flexible and works with your existing VC solutions and software.

The open platform approach and embedded Windows OS (with OPS Module installed) gives you access to cloud-based applications such as BlueJeans, Zoom, Skype for Business, and Cisco Webex etc..



Interactive White Board Software for your Classroom

Tabella UP Series Interactive Intelligent Panels provide classroom-ready solutions to support schools by bringing a truly interactive and collaborative learning experience into their classrooms.

Flow!Works Pro is a white board software which has the friendliest user interface. It integrates the Tabella displays into classrooms to encourage lively discussions with pleasant atmosphere.



Tabella supports multi-touch capability up to 20 points, allowing more students to participate in discussion and highly engaging activities at once.



Subject Tools and Resources

Flow!Works provides over 600 object images in classified subjects for teachers to prepare their coursewares.

Features:

- | | |
|--------------------|----------------------------|
| Media Player | Maths Tools |
| Internet Browser | Geometry Tools |
| Calculator | Number Picker (Lucky Draw) |
| Chart Maker | Clock and Timer |
| Chemistry Elements | Score Board |
| Camera | Handwriting Recognition |
| Magnifier | Multiscreen |



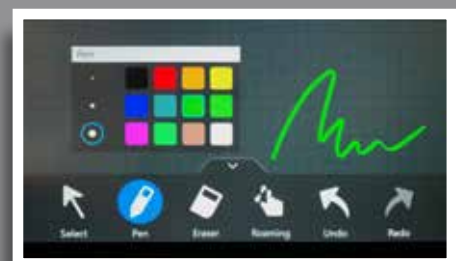
Multiscreen splits the screen to 2, 3 or 4 zones. Students write down their ideas with individual own pen tools.



ENote is a free Windows based IWB software preinstalled in Tabella Panel (with OPS module).

It is a handy and useful white board application suitable for training, presentation and meeting.

ENote can sense your drawing strokes that good to reproduce your writings with thickness differentiation.



After meeting, you may save the minutes or content pages into an eNote file and store it in the local storage. In addition, you can share the content to cloud storage and generate a QR code.

Just scanning the QR code with mobile devices, you can retrieve the images by downloading or share it out by any messaging apps.

NB NOBOOK Virtual Experiment is an interactive and practical teaching tool for middle and high school teachers, making the tedious experiment class efficient and interesting.

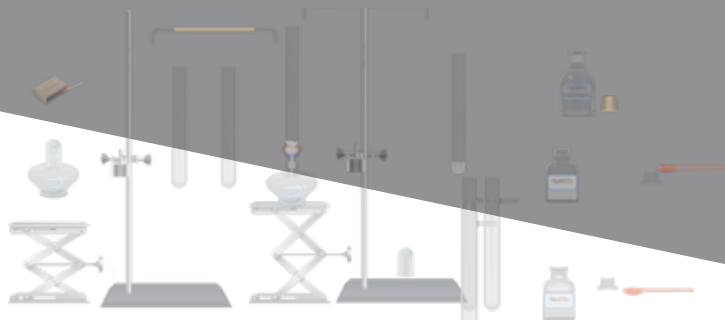
Trial version of NB Physics and Chemistry Experiment applications are preinstalled in Tabella UP Series Panels (with OPS Module) Users can activate the software by purchasing license key.



NB Physics Experiment topics include electricity, mechanics and optics.

Assembly of experimental equipment and setting of parameters are arbitrary.

Experiment covers over 200 equipments related to electricity, mechanics, electromagnetism, optics, thermals and acoustics. All are in the mainstream textbooks of middle and high schools. It can realize tens of thousands of physics experiment operations and demonstrations.



NB Chemistry Experiment covers over 100 experimental materials and 158 chemicals. It can realize almost all experimental operations in inorganic chemistry.

Simple to use and safe in operation, let users reproduce experimental phenomena and present correct experimental data.

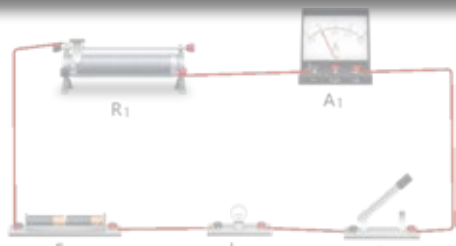
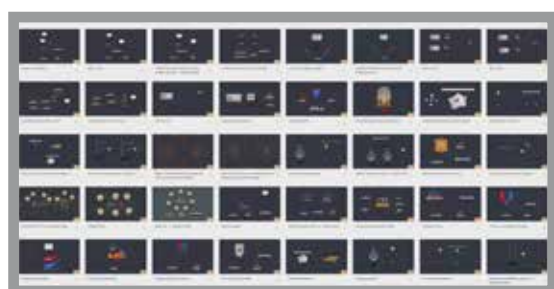


TABELLA works perfectly with latest interactive software tools that give you high personalized, expressive and interactive experiences.



Optional Accessories

OPS



Slot-In PC Module

Intel®Core™ i5/i7 optional

H110 Main Board , 8G 256G SSD

Wireless Dongle



Wall Mount Visualizer



ST01 Mobile Stand





TABELLA Interactive Intelligent Panel (Specification)


Model	L55EBUP	L65EBUP	L75EBUP	L86EBUP
Display				
Panel Size	55 inch	65inch	75inch	86 inch
Aspect	16:9			
Resolution	3840(H)*2160(V)			
Back Light Unit	Direct type LED			
Response Time	4ms			
Display Color	1.07B (10bit)			
Brightness	350cd/m2 (Typ.)			
Contrast Ratio	1200:1 (Typ.)			
Viewing Angle	178°			
Life Time	30000 Hours			
Screen Surface	Toughened Anti-glare Glass with Level 7 of Mohs Standard			
Audio Speaker				
Output Power	Built-in Front Speakers, 15W x2 (8 ohm)			
Connectors				
Front Connectors	USB for Touch x1			
	HDMI x1 (V2.0)			
	USB x 1 (Accessible to both Android OS or OPS OS)			
Inputs	VGA x1			
	VGA Audio In x1			
	MIC In x1			
	HDMI In x4 (OPS: x1)			
	USB for Touch x2			
	USB 2.0 x3			
	DP In x1			
	RS232 x1			
	Ethernet RJ45 x1			
Outputs	Earphone x1			
	HDMI x1			
Operation Systems				
Internal System	Android			
OPS System (Slot-In Module)	Windows 10 Pro			
Touch Sensor System				
Sensor Technology	Infra Red			
Multi Touch	20 points Writing / 20 points Touch Control			
Touch Tool	Finger, Touch pen or other Opaque(soft tip) objects			
Response Time	10ms			
Accuracy	1mm			
Interface	USB2.0 type B or RS232			
Touch Driver	Free drive			
Anti-interference	Anti Strong Light Interference			
Protection Standard	IP65, Enclosed, Waterproof and Dustproof			
Output Coordinate	32767*32767			
Main System				
System Version	Android 6.0			
CPU	ARM Cortex A53 1.5 GHz			
GPU	T720MP2			
RAM / (ROM)	2G / (32G)			
WIFI	2.4G/5G WIFI + AP			
Bluetooth	V2.0			
General				
Power Requirements	100-240V~ 50/60Hz			
Standby Power	≤0.5W			
Overall Power (Nominal, Without OPS)	180W	200W	300W	380W
Dimension L*H*D	1348*798*96mm (TBC)	1488*931*96mm	1714*1060*116mm	1960*1198*116mm
Dimension (Package) L*H*D	TBC	1606*1050*220mm	1835*1178*220mm	2075*1320*220mm
Net Weight (with Mount Bracket)	40Kg (TBC)	48kg +/-1.5Kg	64kg +/-1.5Kg	83kg +/-1.5Kg
Gross Weight	TBC	57kg +/-1.5Kg	75kg +/-1.5Kg	97kg +/-1.5Kg
Wall Mount VESA	600*400mm, M8 screw			


FLOATING POINT

Floating Point Company Limited
All rights reserved © 2019
VII.XXVI.MMXIX

 contact@floatingpoint.com.hk

 +852 9273 9364
+852 5100 6293

 Rm 616, 6/F, E-Tat Factory Building,
4 Heung Yip Road, Wong Chuk Hang,
Hong Kong

 www.floatingpoint.com.hk

Features and specifications are subject to change without notice.